



# Fire Angel

## High Pressure Fire Attack System Petrol Engine

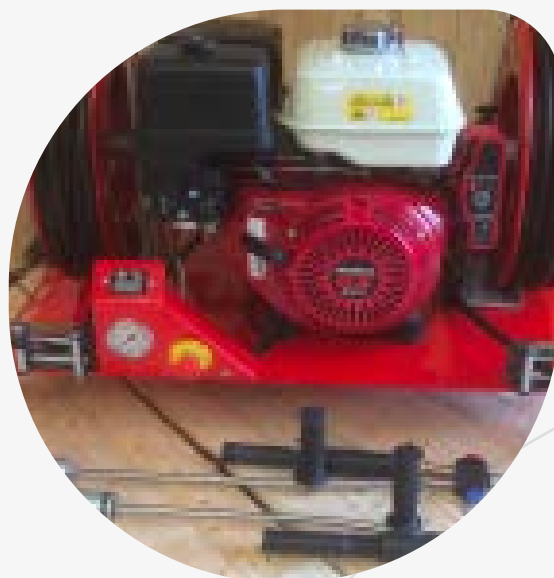
### DESCRIPTION ●

- Compact and Lightweight portable system
- Working Pressure up to 185 Bar – 2800 psi
- Extension up to 120 meters hose length with no pressure loss
- Can be installed with our water tank or vehicle tank
- Steel frame with epoxy coating
- Easy training, intuitive use
- Discharge: 1 or 2 hose reels x 20 m or 30 m,
  - Fire Angel 202•301•302 : equipped with 1 or 2 lances for jet-spray / low-high pressure for water
  - Fire Angel 202F•301F•302F : equipped with 1 or 2 lances for jet-spray / low-high pressure for water/foam
- Fast connection type Safety Lock Guyson Fitting
- Water tank with Storz coupling

### OPERATING CONTROLS ●

Controls are easy to operate and include:

- Electrical starter with key ON/OFF
- Automatic choke control
- LCD display with running time / Engine rev.
- Pressure gauge
- Emergency button
- Model F: Foam dosing system



### SPECIFICATIONS & WARRANTY ●

| FIRE ANGEL       | 202  | 202F   | 301   | 301F  | 302    | 302F   |
|------------------|--|--------|-------|-------|--------|--------|
| Body and Frame   | Steel frame with epoxy black coating           |        |       |       |        |        |
| Pump             | Speck Triple ceramic pistons and body in brass |        |       |       |        |        |
| Flow rate        | 20 l/mn – 5 GPM                                |        |       |       |        |        |
| Maximum pressure | 185 Bars – 2800 psi                            |        |       |       |        |        |
| Engine           | 13 CV– 8.2 Kw Honda – 4 tiempos                |        |       |       |        |        |
| Petrol tank      | 6 litres • 1.5 hour runtime at maximum speed   |        |       |       |        |        |
| Battery          | 12V -13A/h Dry-cell sealed, 12 months load     |        |       |       |        |        |
| Starter          | 12 Volt electric key or Manual recoil          |        |       |       |        |        |
| Reel             | 2  | 2      | 1     | 1     | 2      | 2      |
| Hose             | 20 m   | 20 m   | 30 m  | 30 m  | 30 m   | 30 m   |
| Weight           | 99 kg  | 103 kg | 95 kg | 97 kg | 110 kg | 114 kg |
| Dimensions       | 90x60x66 (LxWxH)                               |        |       |       |        |        |
| Warranty         | 1 year   |        |       |       |        |        |