



EASE OF USE OF THE CONTROL HANDLE

UNIQUE PROTECTION
OF THE BATTERY

360° ROTATING AND DETACHABLE HANDLE

PROTECTION PADS

UNIQUE FORGED CURVED BLADES
MAX CUTTING FORCE 324Kn / 33t

14.2Kg

SPECIAL DESIGNED TIPS FOR BEST GRIP
MAX SPREADING FORCE 591Kn / 60,3t

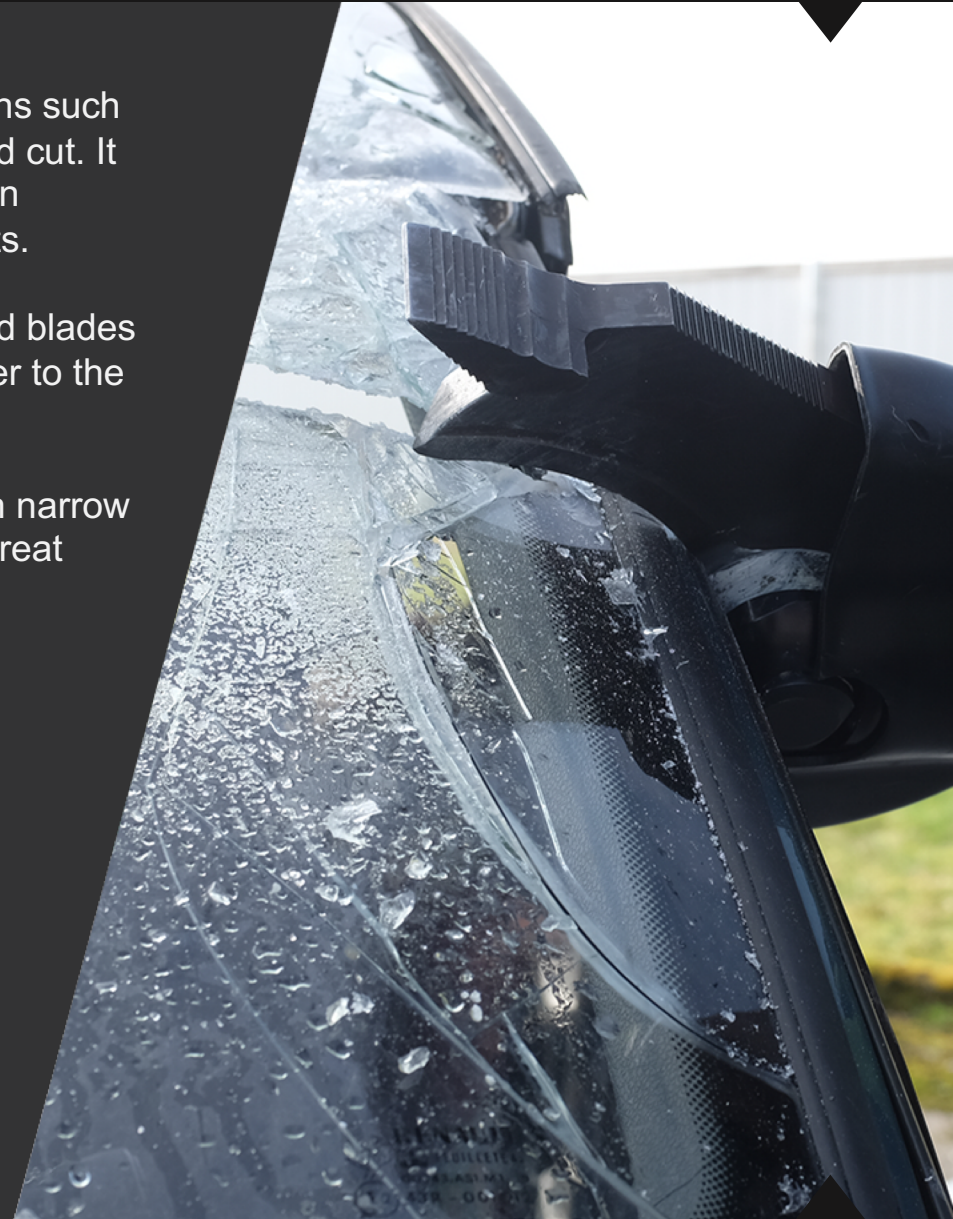
THE LIGHTEST IN ITS
RANGE: ONLY 14,2 Kg



The SK combi tool is a very effective tool for applications such as door openings, enabling you to spread, squeeze and cut. It will be most used for first and rapid rescue operations in buildings and secluded areas after road traffic accidents.

The SK combi tool is the only one equipped with curved blades on the market. The shape of its blades brings the matter to the axis for optimum cutting while securing the operator.

The thin tips of the arms will ensure an excellent grip in narrow openings. The SK combi tool also boasts itself with a great cutting force.





ROBUSTNESS and SAFETY

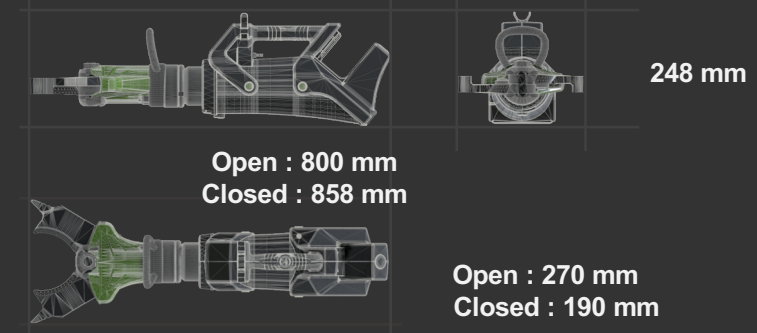
- ▶ Reinforced composite casing with shock protection pads
- ▶ Special design of the casing for a complete protection of the battery
- ▶ Forged steel blades for better cutting performance and an extended resistance.
- ▶ 4 LED lights to illuminate the cutting area
- ▶ Control handle far away from the On/Off switch for an optimal security

ERGONOMIC and AUTONOMOUS

- ▶ Compact, light and balance
- ▶ Long battery life, 45mn, Li-ion 5.0 Ah 28V
- ▶ Same battery on all tools
- ▶ Battery available at all Milwaukee dealer
- ▶ Rotating and detachable handle, ideal for interventions in restricted areas

EASE OF USE

- ▶ Intuitive ON/OFF switch with built in light
- ▶ Central anti-slip handle for easy grip
- ▶ Easy and quick battery insertion and replacement



TECHNICAL CHARACTERISTICS

Spreading distance :	270 mm
Blades opening distance:	120 mm
Spreading force:	35 to 591Kn / 3,6 to 60,3t
Cutting force:	324 Kn / 33t
Cutting capacity:	Round steel bar Ø25 mm
Weight without battery:	14.2 kg
L x W x H (tool open) :	800 x 270 x 248 mm
L x W x H (tool closed) :	858 x 190 x 248 mm
Working pressure:	700 bar / 70 MPa





EASE OF USE OF THE CONTROL HANDLE

UNIQUE PROTECTION
OF THE BATTERY

360° ROTATING AND DETACHABLE HANDLE

PROTECTION
PADS

18,5Kg

SPECIAL DESIGNED TIPS FOR BEST GRIP
MAX SPREADING FORCE 783Kn / 79,8t



The MK combi tool is a very effective tool for applications such as door openings, enabling you to spread, squeeze and cut. It will be most used for big rescue operations in buildings and secluded areas after road traffic accidents.

The thin tips of the arms will ensure an excellent grip in narrow openings.

The MK combined tool also boasts itself with a great cutting force.

ACCESSORIES

2 locks with chain, 2 chains of traction with a hook. Locking system with pin and self-locking. Adaptation and positioning by quick tightening

Maximum working force:	60 Kn / 6,1t
Dimensions of chain links:	10 x 30 mm
Chain resistance:	74 Kn / 7,5t
Strength of links:	74 Kn / 7,5t
Length of a chain	1.8 m
Weight:	13.8 kg



Pulling device with pins to fix chain set



Mechanical extension for combi tool MK

Use with two ball stop pins
Extends up to 740 mm
Weight: 6.1 kg





ROBUSTNESS and SAFETY

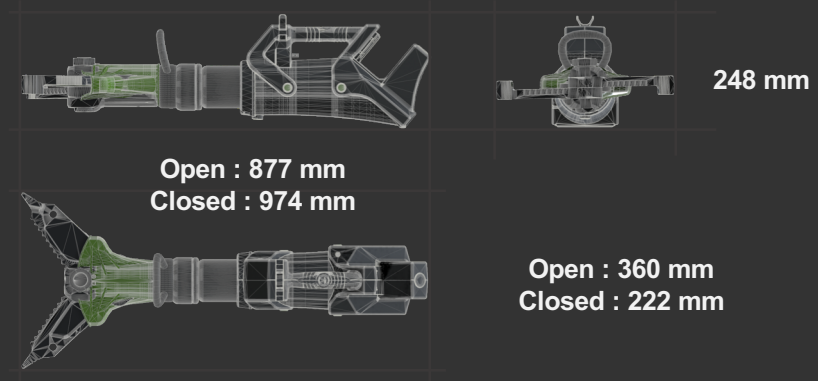
- ▶ Reinforced composite casing with shock protection pads
- ▶ Special design of the casing for a complete protection of the battery
- ▶ Forged steel blades for better cutting performance and an extended resistance.
- ▶ 4 LED lights to illuminate the cutting area
- ▶ Control handle far away from the On/Off switch for an optimal security

ERGONOMIC and AUTONOMOUS

- ▶ Compact, light and balance
- ▶ Long battery life, 45mn, Li-ion 5.0 Ah 28V
- ▶ Same battery on all tools
- ▶ Battery available at all Milwaukee dealer
- ▶ Rotating and detachable handle, ideal for interventions in restricted areas

EASE OF USE

- ▶ Intuitive ON/OFF switch with built in light
- ▶ Central anti-slip handle for easy grip
- ▶ Easy and quick battery insertion and replacement



TECHNICAL CHARACTERISTICS

Spreading distance:	360 mm
Spreading force:	45 to 783 Kn / 4,6t to 79,8t
Cutting force:	491 Kn / 50t
Cutting capacity:	Round steel bar Ø30 mm
Weight without battery:	18.5 kg
L x W x H (tool open) :	877 x 360 x 248 mm
L x W x H (tool closed) :	974 x 222 x 248 mm
Working pressure:	700 bar / 70 MPa