

# RAM SR



EASE OF USE OF THE CONTROL HANDLE

UNIQUE PROTECTION  
OF THE BATTERY

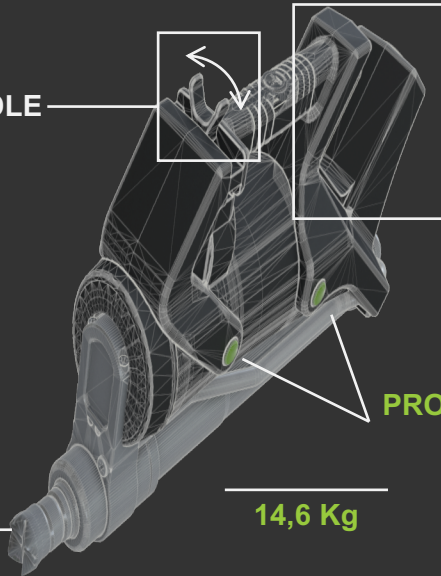
THE LIGHTEST ON THE MARKET  
WITH ONLY 14.6KG

4 POINTED TIPS FOR A  
STRONG AND SAFE GRIP

360° ROTATING HEAD

PROTECTION PADS

14,6 Kg





The SR ram is used to create and stabilize openings after a car or truck accident in order to free victims.

It can also be used to maintain a structure after a collapsed building or a natural disaster.

It is **the lightest RAM on the market** and it has great features. Its special head design with 4 pointed tips will maintain a strong and safe grip on any structure and its 360° head rotation will enable to manoeuvre the ram easily in many angles.

## ACCESSORIES

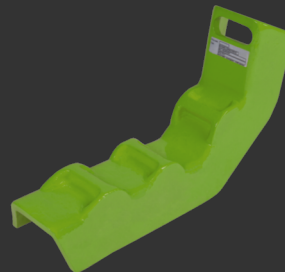
### Extensions for Ram

Can be mounted on the SR and TR1360 from the fixed side of the RAM only.

Available lengths 250, 350 and 500mm

### Support for safe use on the B part of the vehicle

Maximum load:	269,5 Kn / 27,5t
Resistance:	120 Kn / 12,2t
L x W x H :	460 x 320 x 145 mm
Weight:	9.8 kg





## ROBUSTNESS and SAFETY

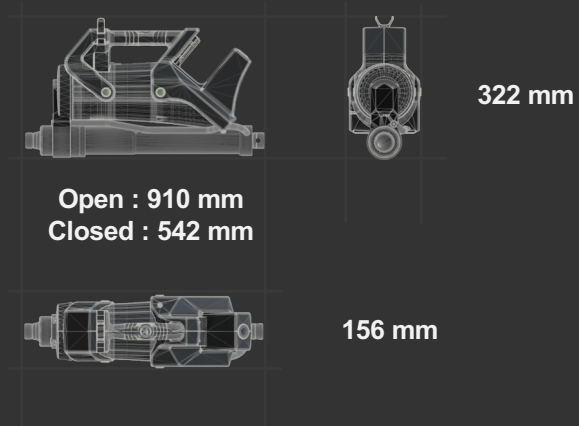
- ▶ Reinforced composite casing with shock protection pads
- ▶ Special design of the casing for a complete protection of the battery
- ▶ Removable head on the fixed side of the cylinder. The two cylinder are treated for prolonged strength.
- ▶ 4 LED lights to illuminate the working area
- ▶ Control handle far away from the On/Off switch for an optimal security

## ERGONOMIC and AUTONOMOUS

- ▶ Compact, light and balance
- ▶ Long battery life, 45mn, Li-ion 5.0 Ah 28V
- ▶ Same battery on all tools
- ▶ Battery available at all Milwaukee dealer

## EASE OF USE

- ▶ Intuitive ON/OFF switch with built in light
- ▶ Central anti-slip handle for easy grip
- ▶ Easy and quick battery insertion and replacement



## TECHNICAL CHARACTERISTICS

Stroke :	368 mm
Maximum length:	910 mm
Pushing force:	111 Kn / 11,3t
Weight without battery:	14.6 kg
L x W x H (tool open) :	910 x 156 x 322 mm
L x W x H (tool closed) :	542 x 156 x 322 mm
Working pressure:	700 bar / 70 Mpa

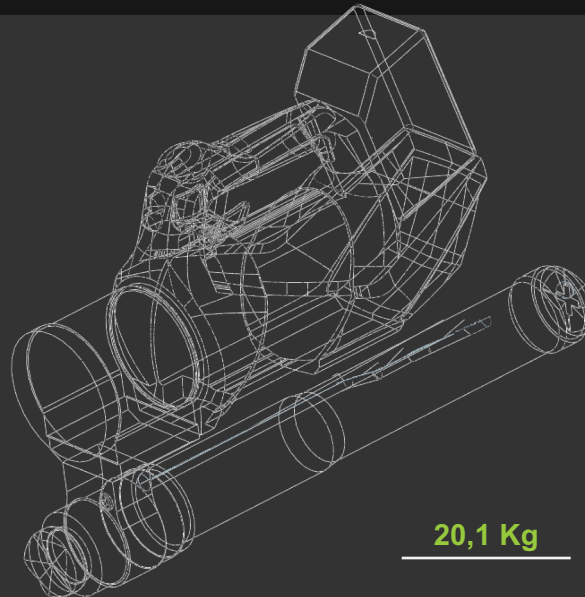


# RAM TR1360



4 POINTED TIPS FOR A  
STRONG SAF GRIP

360° ROTATING HEAD



1386 MM STROKE

20,1 Kg



# RAM TR1360



The TR ram is used to create and stabilize openings after a car or truck accident in order to free victims.

It can also be used to maintain a structure after a collapsed building or a natural disaster. **Telescopic Ram with total length of 1386 mmm.**

Its special head design with 4 pointed tips will maintain a strong and safe grip on any structure and its 360° head rotation will enable to manoeuver the ram easily in many angles.

## ACCESSORIES

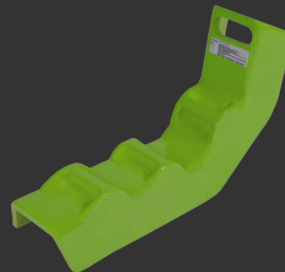
### Extensions for Ram

Can be mounted on the SR and TR1360 from the fixed side of the RAM only.

Available lengths 250, 350 and 500mm

Support for safe use on the base of the B post of the vehicle

Maximum load:	269,5 Kn / 27,5t
Resistance:	120 Kn / 12,2t
L x W x H :	460 x 320 x 145 mm
Weight:	9.8 kg





## ROBUSTNESS and SAFETY

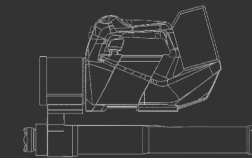
- ▶ Reinforced composite casing with shock protection pads
- ▶ Special design of the casing for a complete protection of the battery
- ▶ Removable head on the fixed side of the cylinder. The two cylinder are treated for prolonged strength.
- ▶ 4 LED lights to illuminate the working area
- ▶ Control handle far away from the On/Off switch for an optimal security

## ERGONOMIC and AUTONOMOUS

- ▶ Compact, light and balance
- ▶ Long battery life, 45mn, Li-ion 5.0 Ah 28V
- ▶ Same battery on all tools
- ▶ Battery available at all Milwaukee dealer

## EASE OF USE

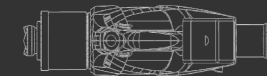
- ▶ Intuitive ON/OFF switch with built in light
- ▶ Central anti-slip handle for easy grip
- ▶ Easy and quick battery insertion and replacement



Open : 1386 mm  
Closed : 586 mm



349 mm



134 mm

## TECHNICAL CHARACTERISTICS

1 <sup>st</sup> piston stroke :	428 mm
2 <sup>nd</sup> piston stroke :	372 mm
Total stroke:	800 mm
Maximum extension:	1386mm

Pushing force: 62 to 108Kn / 6,3 to 11t

Weight without battery: 20,1 kg

L x W x H (tool open) 1386 x 134 x 349 mm

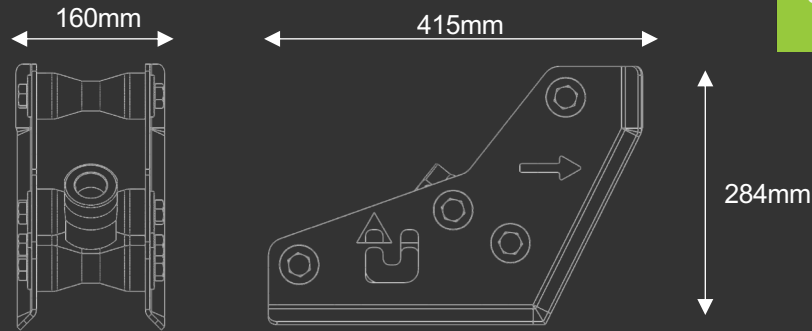
L x W x H (tool closed) 586 x 134 x 349 mm

Working pressure: 700 bar / 70 MPa

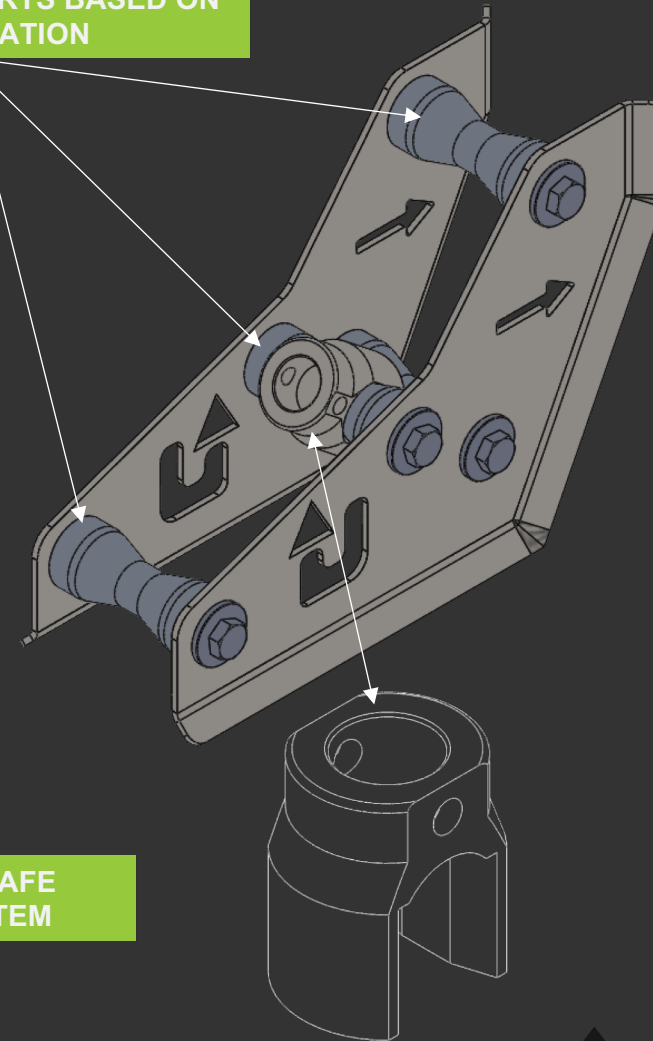
# RAM SUPPORT



## NEW BORN



3 POSSIBLE SUPPORTS BASED ON CONFIGURATION



### TECHNICAL CHARACTERISTICS

Weight :	8,85kg (with ram head)
Mounting side :	only on the fixed side of the ram
L x l x H :	415 x 160 x 284 mm

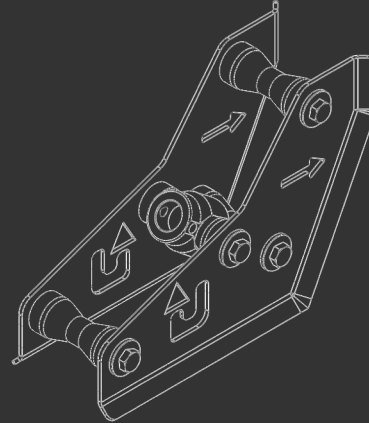
THE LIGHTEST ON THE MARKET

UNIQUE AND SAFE  
LOCKING SYSTEM

Dimensions  Exploded view 



# RAM SUPPORT



Can be used with the original ram head or the dedicated ram head.  
The dedicated ram head is much safer: it can not escape.  
With better support, you can push more.  
We can focus on the mobile part of the ram.



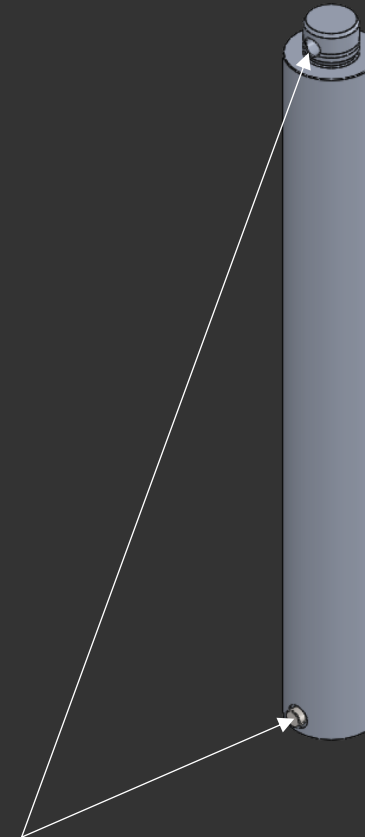


## TECHNICAL CHARACTERISTICS

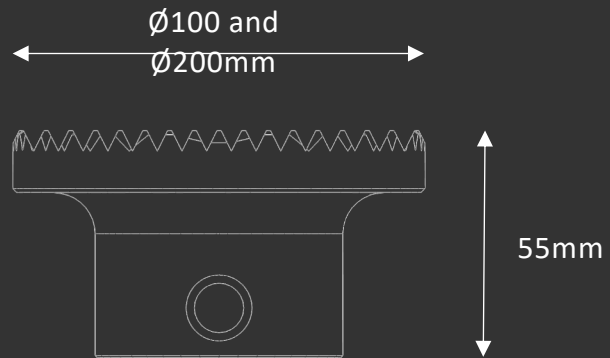
Weight of the 250mm extension :	1,94kg
Weight of the 350mm extension :	2,74kg
Weight of the 500mm extension :	3,92kg

Mounting side :	Only on the fixed side
-----------------	------------------------

L x W x H :	Ø60 x 250, 350 and 500 mm
-------------	---------------------------



Protection with safety pin



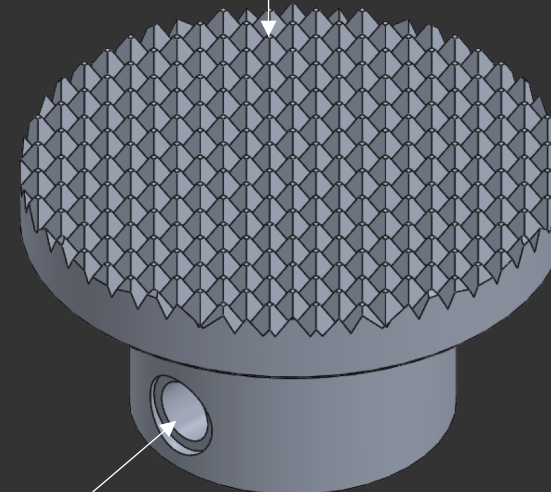
## TECHNICAL CHARACTERISTICS

Weight  $\varnothing 100$ mm : 0,5kg  
Weight  $\varnothing 200$ mm : 1,29kg

Mounting side: Only on the fixed side

L x W x H :  $\varnothing 100$  and  $\varnothing 200$  x 55 mm

Ribbed side for better support and prevent slippage



Protection with safety pin





## OPTIONAL

### Battery Li-ion 28V 5Ah



Battery Li-Ion 28v 5Ah  
No memory effect  
Rapid and easy connexion  
LED charge status display  
Full charging time : 60 min  
Autonomy : 45mn  
Charging cycles : approx. 1000

### Power supply 220V



Length 5m

### Charger 220V



Voltage range 28V  
Charging current 5Ah  
Quick charging  
Weight 700g

### Transport bag



1050 x 300 x 300 mm for :

- Cutters
- Spreaders
- Combined tools
- Special tools

650 x 250 x 400 for Rams