

**MT**  
[www.mototruck.pl](http://www.mototruck.pl)





# ABOUT US

**MOTO-TRUCK** with headquarters in Kielce is a polish manufacturer operating on the market of specialized vehicles for nearly 25 years. We manufacture, among others, pumps, plots, masts, tanks and shutters. This gives the possibility of a flexible approach to the requirements of buyers. We constantly implement **innovative solutions** to increase functionality and facilitate the use of our products. The superstructures offered by us are supported by the **most modern control systems**.



**SPECIALIZED  
VEHICLES**

# ABOUT US

We make specialized vehicles from the **highest quality corrosion-resistant materials** - aluminum, stainless steel and **recyclable** plastics. We make sure that the design of our vehicles is a combination of global trends dominating in the automotive industry and traditional and proven solutions. Cars prepared by us have a water and foam tank made of materials that enable the transport of drinking water.



**SPECIALIZED  
VEHICLES**



# ABOUT US

The equipment of the vehicles we deliver is based on the **latest, innovative technical solutions**. Thanks to innovative solutions, our vehicles will prove themselves in multi-purpose operations, even in the most difficult geographic conditions.



**SPECIALIZED  
VEHICLES**



## WHY US?

We have over **25 years of experience**;

Our vehicles meet the **highest European standards**;

We have a **qualified team of specialists**;

We guarantee our clients **professionalism, punctuality, reliability and the highest quality of services** rendered;

We are **constantly improving** our products;



**SPECIALIZED  
VEHICLES**

# OUR IDEA



**SPECIALIZED  
VEHICLES**

# HISTORY

Implementation of  
the PN-EN ISO 9001  
quality management  
system

First food truck

1996

2004

2013

2016

2020

Establishment of  
the **MOTO-TRUCK**  
company

Obtaining  
the **AQAP 2110:2009**  
certificate

Production scale  
of **250** rescue and  
firefighting vehicles  
per year



**SPECIALIZED  
VEHICLES**



# PRODUCTS

**MOTO-TRUCK** company deals in the production of technologically advanced firefighting and rescue vehicles in the following class:

- light,
- medium,
- heavy.



**SPECIALIZED  
VEHICLES**



# PRODUCTS

Vehicles are made on the **chassis of leading manufacturers** in the car market.



**SPECIALIZED  
VEHICLES**

# PRODUCTS

MOTO-TRUCK company also uses its design solutions in the production of:

- water pumps,
- water and foam turrets,
- pneumatic light masts,
- PP-C water and foam tanks,
- Compressed Air Foam System CAFS.



**SPECIALIZED  
VEHICLES**



# TECHNOLOGIES

The company has a professional and modern machine park equipped with numerical control (NC) machines such as:

- CNC milling plotters,
- CNC milling machines,
- CNC lathes,
- welding machines.



**SPECIALIZED  
VEHICLES**



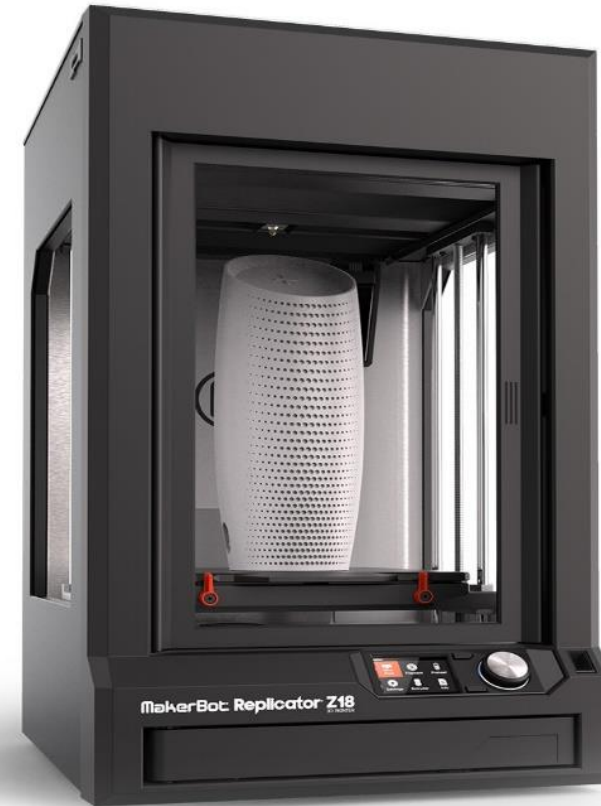
# TECHNOLOGIES



**SPECIALIZED  
VEHICLES**

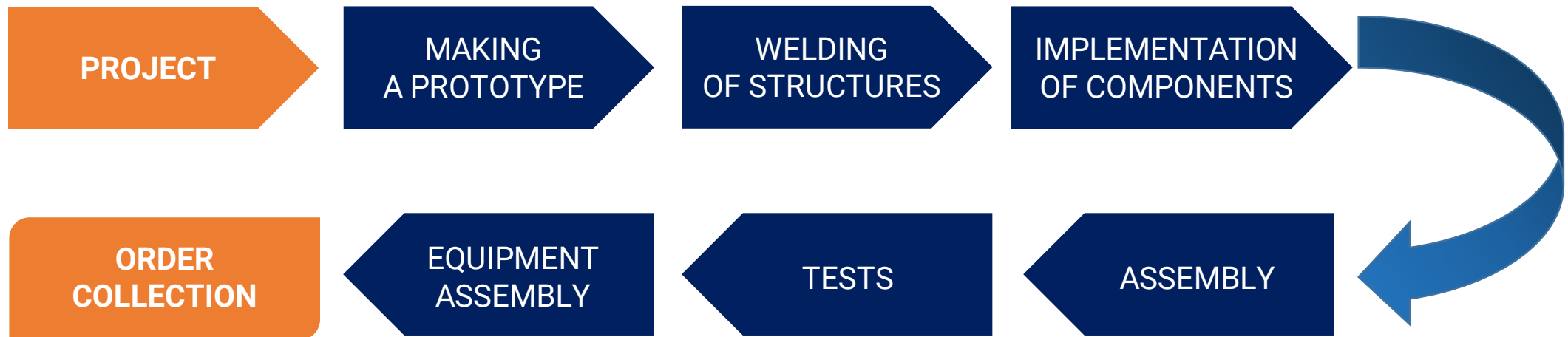
# TECHNOLOGIES

Constantly developing design and construction department uses the latest scientific achievements including additive manufacturing processes – **3D printing**.



**SPECIALIZED  
VEHICLES**

# IMPLEMENTATION STAGES





**IMPLEMENTATION**

# **WELDING OF STRUCTURES**



**SPECIALIZED  
VEHICLES**

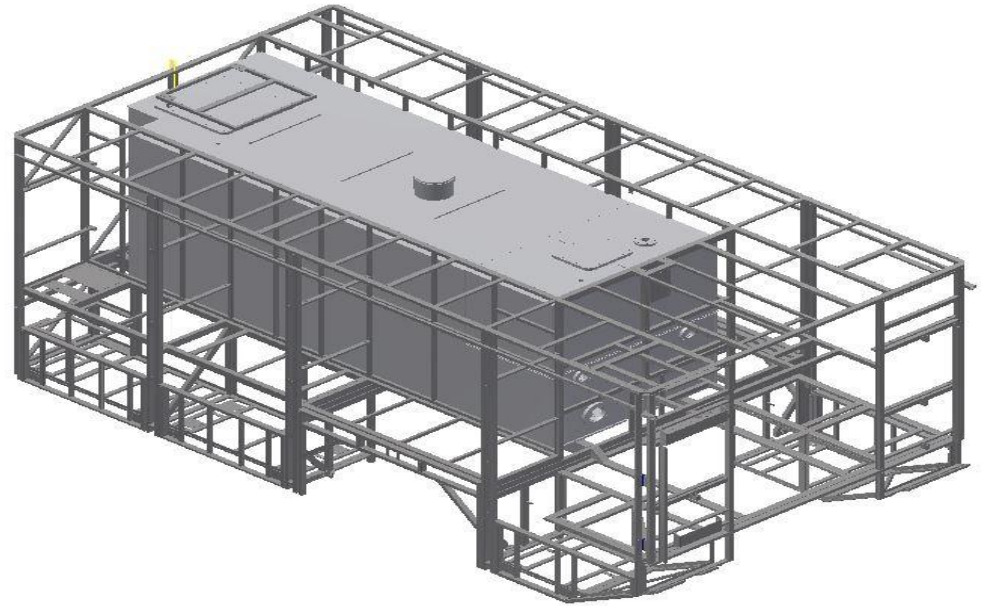
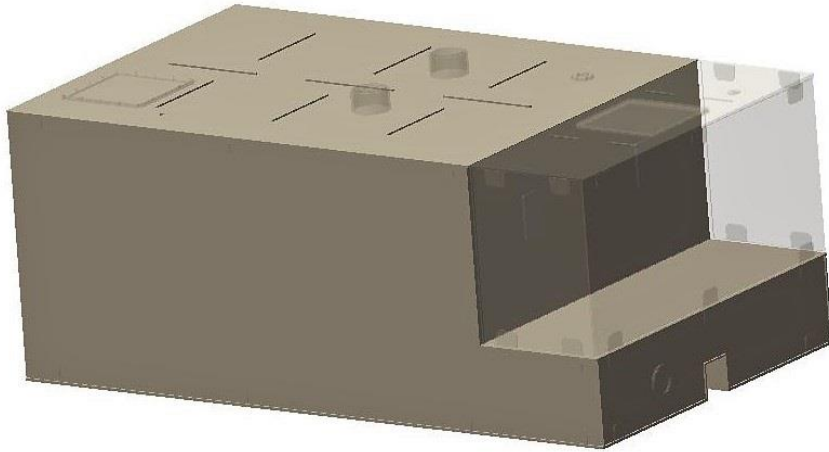


# IMPLEMENTATION WATER SYSTEM



SPECIALIZED  
VEHICLES

# IMPLEMENTATION WATER TANKS



**SPECIALIZED  
VEHICLES**





## EXAMPLE REALISATION

### **MAN TGM 13.290 4X4 BB** MEDIUM CLASS FIREFIGHTING AND RESCUE VEHICLE



**SPECIALIZED  
VEHICLES**

## EXAMPLE REALISATION

**MAN TGM 13.290 4X4 BB**  
MEDIUM CLASS FIREFIGHTING  
AND RESCUE VEHICLE



**SPECIALIZED  
VEHICLES**





## EXAMPLE REALISATION

**MAN TGM 13.290 4X4 BB**  
MEDIUM CLASS FIREFIGHTING  
AND RESCUE VEHICLE  
FOR MILITARY USE



**SPECIALIZED  
VEHICLES**



## EXAMPLE REALISATION

**MAN TGM 13.290 4X4 BB**  
MEDIUM CLASS FIREFIGHTING  
AND RESCUE VEHICLE  
FOR MILITARY USE



**SPECIALIZED  
VEHICLES**



## EXAMPLE REALISATION

### **MAN TGS 33.460 6X6 BB** **HEAVY CLASS FIREFIGHTING AND RESCUE VEHICLE**



**SPECIALIZED  
VEHICLES**



## EXAMPLE REALISATION

### MAN TGS 33.460 6X6 BB HEAVY CLASS FIREFIGHTING AND RESCUE VEHICLE



**SPECIALIZED  
VEHICLES**



## EXAMPLE REALISATIONS



MAN TGM 13.290 BB



IVECO EUROCARGO



MAN TGM 18.320 BB



RENAULT D14 HIGH K



**SPECIALIZED  
VEHICLES**



**MOTO-TRUCK sp. z o.o.**  
ul. ks. Piotra Ściegiennego 270  
25-116 Kielce

REGON 382091601  
NIP 657-294-22-26

+48 41 361 33 13  
biuro@mototruck.pl  
www.mototruck.pl  
@mototruck.pl